

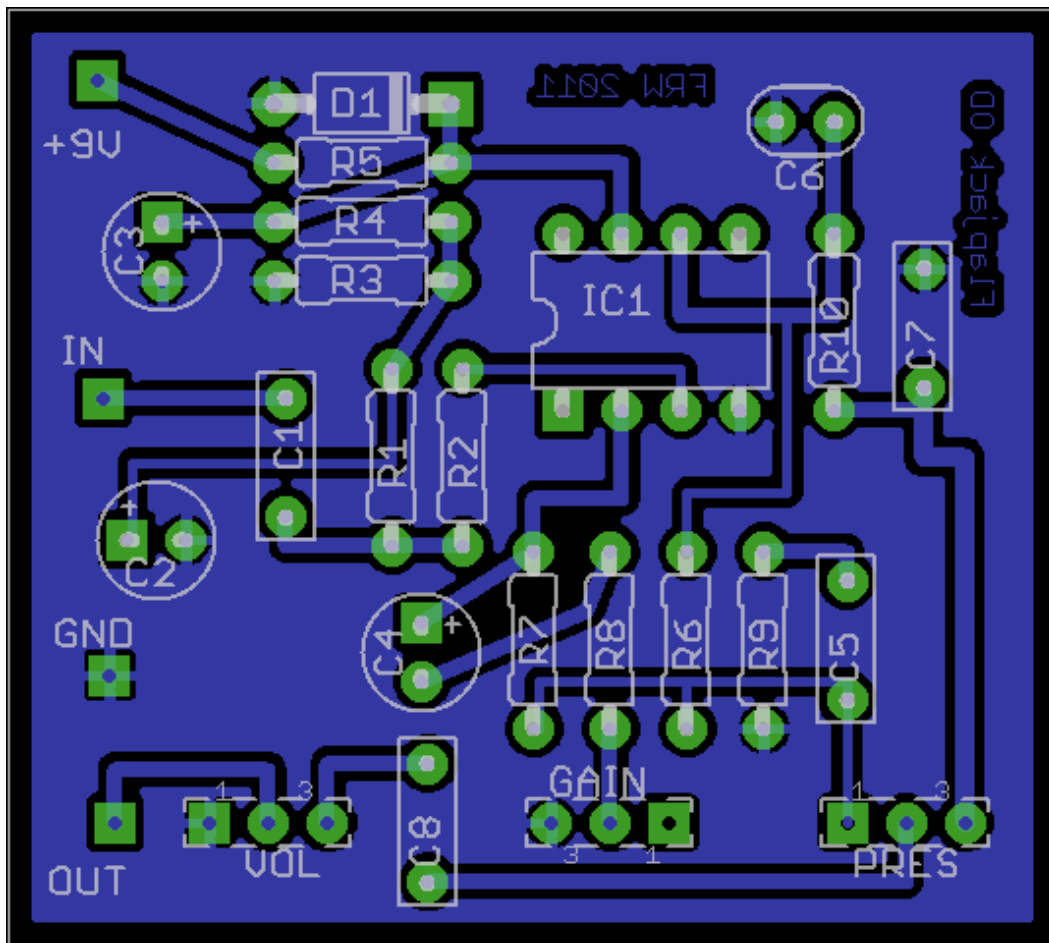
Flapjack OD

FRW - January 2011

This is a blending of a few different versions of the Hotcake Overdrive, as drawn by Martin Chittum (soulsonic) and posted on FreeStompBoxes.org. I changed a few cap values minimally, but otherwise it's the same thing.

Note: The Gain pot is specified as C50K, which is what production Hot Cakes have. But I find that 50K (of any taper) is too large a value to get a usable sweep with this particular project, so I use a simple B10K.

PCB dimensions are (approximately): 1.77" wide x 1.59" high. Print at 300dpi for proper sizing.



Parts List

Name	Value
C1	10nF
C2	10 μ F
C3	100 μ F
C4	10 μ F
C5	82nF
C6	470pF
C7	10nF
C8	47nF
R1	1M
R2	10K
R3	100K
R4	82K
R5	220R
R6	10K
R7	100K
R8	220R
R9	1K
R10	10K
D1	1N4001
IC1	LM741*
GAIN	C50K**
PRESENCE	B25K
VOLUME	A50K

* Other single op amp packages will also work, including TL071.

** I prefer B10K

